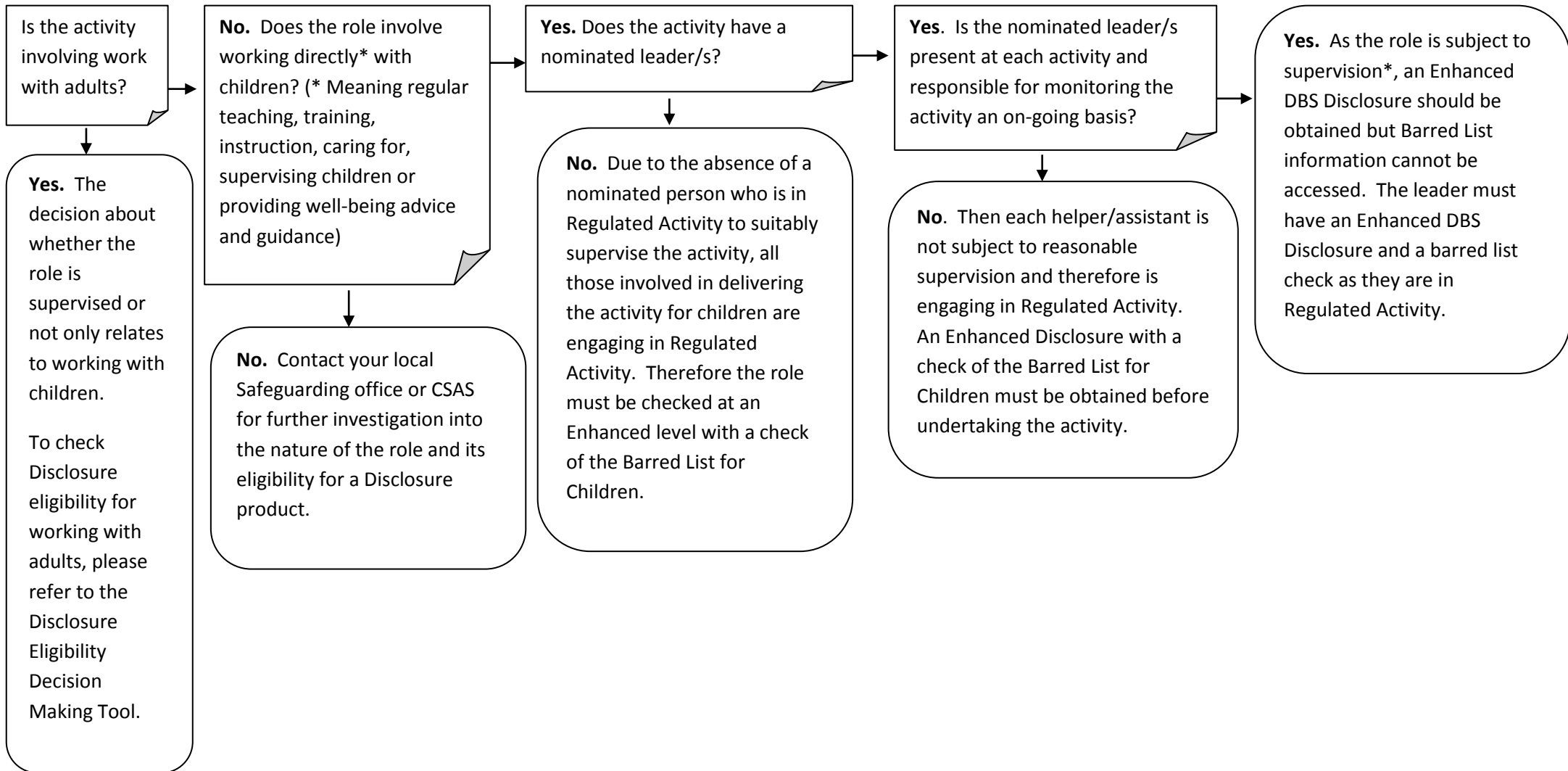


Decision Making Tool for determining Supervision when working with Children



Decision Making Tool for determining Supervision when working with Children

Please note that when establishing if a person, intending to work with children, will be in Regulated Activity or not supervision is not satisfied by having a nominated person in place to whom the post-holder reports. *Supervision requires the existence of on-going monitoring of the activity and those undertaking it whilst the activity is taking place.