

Choosing the appropriate ID verification route

This document will assist you in determining which route should be used when verifying the identity of DBS applicants.

More information on the routes of ID verification can be found here:

<https://www.gov.uk/government/publications/dbs-identity-checking-guidelines/id-checking-guidelines-for-dbs-check-applications>

Diagrams to establish eligibility for a DBS Disclosure

Diagram A

For applicants who are in a paid role

Diagram B

For applicants who are in voluntary role

Diagram A

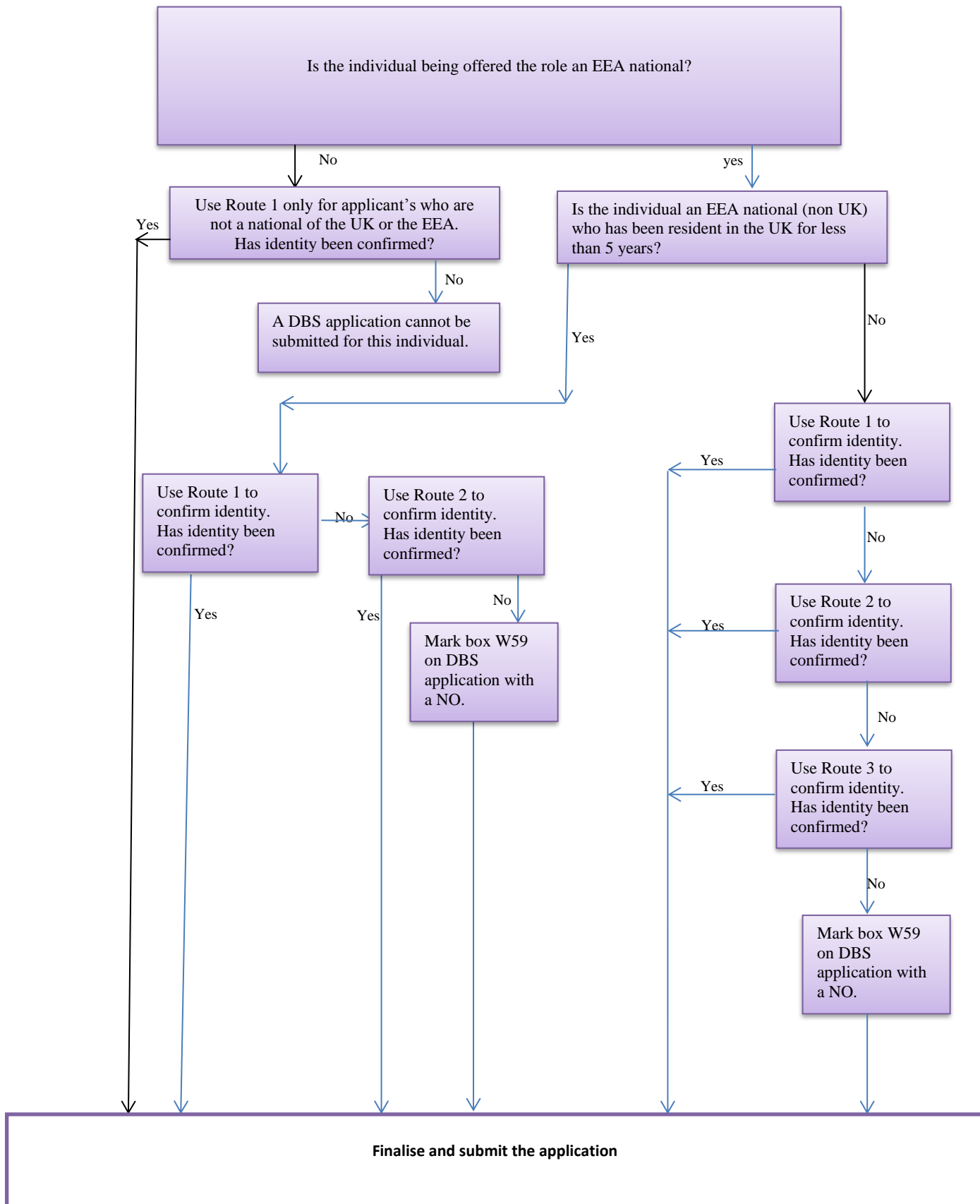


Diagram B

